

---

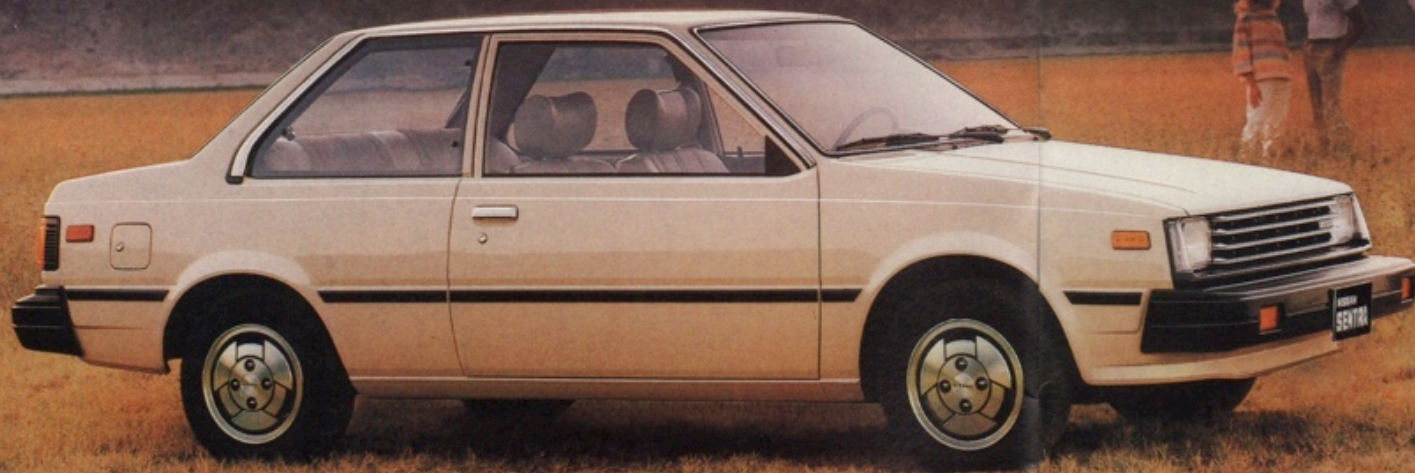
# NISSAN/DATSUN

---

• 1 • 9 • 8 • 3 •

---





Nissan Sentra Deluxe MPG 2-Door Sedan



Nissan Sentra Wagon Deluxe



Nissan Sentra 4-Door Sedan Deluxe



Nissan Sentra Hatchback Coupe XE

2 **Nissan Sentra. You need this car.**

These days, saving money isn't just desirable, it's essential. That's why you need the Nissan Sentra. From its penny-pinching price to its dollar-saving mileage,\* this is a car that preserves your pocketbook without short-changing you on style, performance, comfort or utility.

There are six Nissan Sentras to choose among. (Five in California.) From the sporty Coupe XE to the practical Wagon Deluxe, there's a model to fit your lifestyle and your budget.

**Nissan Sentra Highlights**

- 55 EST HWY MPG/40 EPA EST MPG\* (Deluxe MPG 2-Door Sedan, not available in California)
- E-type 1.6-liter OHC engine (1.5-liter in Deluxe MPG)
- Rack-and-pinion steering
- Power-assisted front disc brakes
- Reclining front bucket seats (driver's seat only in Standard model)
- Electric rear-window defroster
- Remote, locking fuel-filler door (Deluxe and XE models)
- Halogen headlights (Deluxe and XE models)
- Tinted glass windows (Deluxe and XE models)...and more, much more.

**\*1983 EPA EST. NISSAN SENTRA MPG**

	49 States HWY/MPG	California HWY/MPG
Deluxe MPG: 4-speed	55/ 40	N.A.
Sedans and Coupe: 5-speed	50/ 35	N.A.
Sedans and Coupe: Automatic	39/ 31	N.A.
Wagon: 5-speed	50/ 35	N.A.
Wagon: Automatic	39/ 31	N.A.

**Remember:** Use estimated MPG for comparison. Your mileage may differ, depending on speed, weather and trip length. Your actual highway mileage will probably be less than the estimated highway fuel economy. For California mileage, see your dealer. California mileage lower.

Some items shown are optional. See the 1983 Nissan Sentra brochure for more complete information.

**DIMENSIONS AND WEIGHTS**

	2-Door Sedan Deluxe	4-Door Sedan Deluxe	Wagon Deluxe	Hatch- back Coupe XE
Wheelbase (in.)	94.5	94.5	94.5	94.5
Length (in.)	167.3	167.3	172.2	167.3
Width (in.)	63.7	63.7	63.7	63.7
Height (in.)	54.5	54.5	53.5	53.3
Turning Diameter** (ft.)	29.5	29.5	29.5	29.5
Curb Weight† (lbs.)	1845	1855	1945	1915
Fuel Capacity (gal.)	13.2‡	13.2	13.2	13.2

\*\*Curb to curb. †Vehicles with optional equipment or California emissions equipment will be slightly heavier. Standard model: 1850, Deluxe MPG model: 1840.

‡Deluxe MPG model: 10.5 gal.



Nissan Pulsar NX Interior

NISSAN  
PULSAR NX

Nissan Pulsar NX

4

## New Nissan Pulsar NX. Bet you're gonna want one.

The brand new Nissan Pulsar NX will excite you with its wind-cheating shape; please you with its performance and handling; and reward you with its economical running\*.

You'll find many of life's finer things in this fully equipped car as well. Standard equipment includes such luxury items as power-assisted rack-and-pinion steering, sun roof and AM/FM 4-speaker stereo. If you want it, the Nissan Pulsar NX has it.

### Nissan Pulsar NX Highlights

- 1.6-liter lightweight OHC engine
- Tilt-adjustable steering column
- Power-assisted rack-and-pinion steering
- Fold-down rear seat back
- Seat-back and door storage pockets
- Power-assisted front disc brakes
- Rectangular halogen headlights
- Fully reclining front seats
- Tinted glass all around
- Alloy wheels (optional)
- Center console
- Remote side mirrors
- Electronic tachometer
- Remote fuel-filler door/trunk opener
- Walk-in device on passenger seat
- Trip odometer
- Cut-pile carpeting...and more, much more.

### \*1983 EPA EST. NISSAN PULSAR NX MPG

	49 States HWY/MPG	California HWY/MPG
Nissan Pulsar NX: 5-speed	50/ (35)	N.A.
Nissan Pulsar NX: Automatic	39/ (31)	N.A.

**Remember:** Use estimated MPG for comparison. Your mileage may differ, depending on speed, weather and trip length. Your actual highway mileage will probably be less than the estimated highway fuel economy. For California mileage, see your dealer. California mileage lower.

Some items shown are optional. See the 1983 Nissan Pulsar NX brochure for more complete information.

### DIMENSIONS AND WEIGHTS

	Nissan Pulsar NX
Wheelbase (in.)	95.0
Length (in.)	162.4
Width (in.)	63.7
Height (in.)	54.1
Turning Diameter** (ft.)	30.2
Curb Weight† (lbs.)	1940
Fuel Capacity (gal.)	13.2

\*\*Curb to curb. †Vehicles with optional equipment or California emissions equipment will be slightly heavier.

5



200-SX Hatchback SL



200-SX Hardtop Deluxe



200-SX Hatchback Deluxe

200-SX Hardtop SL

8 **Datsun 200-SX. Style with substance.**

International good looks and down-home comfort match brisk performance and precise handling in the Datsun 200-SX. It's an elegant car with muscle as well as grace. A 2.2-liter, fuel-injected, NAPS-Z engine gives the 200-SX a potent punch. Fully reclining front bucket seats, power-assisted steering and AM/FM 6-speaker stereo give it luxury. And the vocalized warning system in SL models keeps you informed in plain English on the state of six system functions. The 200-SX—it's high-quality sophistication.

**Datsun 200-SX Highlights**

- L-Jetronic fuel injection • 5-speed overdrive manual transmission
- 3-speed automatic with lock-up torque converter optional on SL models and Deluxe Hardtop
- Power-assisted 4-wheel disc brakes
- New leather upholstery option
- Power steering • Rear-window defroster • Remote fuel-filler and hatch/trunk openers • Cruise Control standard on SL models • Dual electric remote-control mirrors (SL models) • Driver's seat with adjustable lumbar support and cushion height (SL models) • Power windows (SL models)... and more, much more.

**1983 EPA ESTIMATED 200-SX MPG**

	49 States HWY/MPG	California HWY/MPG
Hatchback: 5-speed	38/ (27)	38/ (27)
Hatchback: Automatic	32/ (25)	32/ (25)
Hardtop: 5-speed	38/ (27)	38/ (27)
Hardtop: Automatic	32/ (25)	32/ (25)

*Remember:* Use estimated MPG for comparison. Your mileage may differ, depending on speed, weather and trip length. Your actual highway mileage will probably be less than the estimated highway fuel economy.

Some items shown are optional. See the 1983 Datsun 200-SX brochure for more complete information.

**DIMENSIONS AND WEIGHTS**

	Hatchback	Hardtop
Wheelbase (in.)	94.5	94.5
Length (in.)	176.2	176.2
Width (in.)	66.1	66.1
Height (in.)	51.6	51.6
Turning Diameter* (ft.)	34.1	34.1
Curb Weight** (lbs.)	2610	2585
Fuel Capacity (gal.)	15.9	14.0
Horsepower (5200 rpm)	102	102

\*Curb to curb. \*\* Vehicles with optional equipment or California emissions equipment will be slightly heavier.



Maxima Sedan



Diesel Maxima Sedan



Maxima Wagon



Maxima Interior

## 10 Datsun Maxima. Black-tie elegance.

The Datsun Maxima may be strictly upper crust, but it's comfortable in any company. With independent suspension, and a powerful engine bred in the legendary 240-Z, the Maxima has road-worthiness to complement its luxury. And, to add a dimension, there's a quiet, powerful diesel available.

Among the many features of the Maxima's rich interior is Nissan's unique vocalized warning system. And, everywhere you look is the first-class kind of quality you expect in a car this refined.

### Datsun Maxima Highlights

- Choice of 2.4-liter gasoline engine or 2.8-liter diesel
- 5-speed overdrive manual transmission standard on sedans
- New 4-speed overdrive automatic transmission with lock-up torque converter optional on sedans, standard on wagons
- Power-assisted rack-and-pinion steering
- New leather upholstery option including full electronic digital instrument panel
- Power windows and door locks
- Fully integrated air conditioning
- Electric sun roof standard on gasoline-powered Wagon, optional on Sedans...and more, much more.

### 1983 EPA ESTIMATED MAXIMA MPG

	49 States HWY/MPG	California HWY/MPG
Sedan: 5-speed	36/ (23)	36/ (23)
Sedan: Automatic	35/ (23)	35/ (23)
Wagon: Automatic	34/ (22)	34/ (22)
Diesel Sedan: 5-speed	43/ (30)	N.A.*
Diesel Sedan and Wagon: Automatic	42/ (28)	N.A.*

Remember: Use estimated MPG for comparison. Your mileage may differ, depending on speed, weather and trip length. Your actual highway mileage will probably be less than the estimated highway fuel economy.

Some items shown are optional. See the 1983 Datsun Maxima brochure for more complete information.

### DIMENSIONS AND WEIGHTS

	Diesel Sedan*	Diesel Wagon*	Sedan	Wagon
Wheelbase (in.)	103.4	103.4	103.4	103.4
Length (in.)	183.3	186.8	183.3	186.8
Width (in.)	65.2	64.6	65.2	64.6
Height (in.)	54.5	55.7	54.5	55.7
Curb Weight** (lbs.)	3040	3185	2880	3150
Fuel Capacity (gal.)	16.4	15.9	16.4	15.9
Horsepower (4600 rpm)	80	80	—	—
Horsepower (5200 rpm)	—	—	120	120

\*Diesel Maxima not available in some areas. California diesel available spring 1983. \*\*Vehicles with optional equipment or California emissions equipment will be slightly heavier.



Nissan Stanza 4-Door Sedan XE



Nissan Stanza 2-Door Sedan XE



Nissan Stanza 4-Door Sedan Deluxe



Nissan Stanza 2-Door Sedan Deluxe

6 **Nissan Stanza. Drive into the future.**

High technology engineering makes the Nissan Stanza a car of tomorrow, today. Shaped in the wind tunnel, designed by computers, it's a car that will seat five in comfort. With its NAPS-X engine and fully independent suspension, the front-wheel-drive Nissan Stanza delivers heads-up performance with bucks-down mileage.\*

Whether you choose XE or Deluxe, 2-Door or 4-Door, the Nissan Stanza will take you into the future with room to spare.

**Nissan Stanza Highlights**

- Power-assisted, ventilated front disc brakes
- Independent rear suspension
- 2.0-liter 4 cyl. OHC NAPS-X engine
- 5-speed overdrive manual transaxle
- Power-assisted rack-and-pinion steering
- Reclining lowback front bucket seats
- Optional sliding electric sun roof (XE models)
- Rectangular halogen headlights
- Dual, remote side mirrors (XE models)
- Tilt-adjust steering column
- Variable intermittent wipers (XE models)
- Remote fuel-filler, hatch openers (XE models)...and more, much more.

**\*1983 EPA EST. NISSAN STANZA MPG**

	49 States HWY/MPG	California HWY/MPG
2-Door Sedan: 5-speed	45/ (31)	43/ (29)
2-Door Sedan: Automatic	36/ (27)	34/ (26)
4-Door Sedan: 5-speed	45/ (31)	43/ (29)
4-Door Sedan: Automatic	36/ (27)	34/ (26)

*Remember:* Use estimated MPG for comparison. Your mileage may differ, depending on speed, weather and trip length. Your actual highway mileage will probably be less than the estimated highway fuel economy.

Some items shown are optional. See the 1983 Nissan Stanza brochure for more complete information.

**DIMENSIONS AND WEIGHTS**

	2-Door Deluxe	4-Door Deluxe	2-Door XE	4-Door XE
Wheelbase (in.)	97.2	97.2	97.2	97.2
Length (in.)	170.9	173.4	170.9	173.4
Width (in.)	65.2	65.2	65.6	65.6
Height (in.)	53.9	54.7	53.9	54.7
Turning Diameter* (ft.)	32.1	32.1	32.1	32.1
Curb Weight** (lbs.)	2190	2215	2260	2285
Fuel Capacity (gal.)	14.3	14.3	14.3	14.3

\*Curb to curb. \*\*Vehicles with optional equipment or California emissions equipment will be slightly heavier.



Turbo ZX 2-Seater



Turbo ZX 2+2



280-ZX 2-Seater



280-ZX 2+2

12 **Datsun 280-ZX. The awesome experience.**

To turbo or not to turbo, that is the question. The choice is yours in the Datsun 280-ZX. Either way, the result is awesome. And, whether you pick the 2-seater or 2+2, it's Z-Car all the way.

There's legendary performance, precision handling and luxurious comfort in the 280-ZX. Its power-assisted rack-and-pinion steering, four-wheel disc brakes and muscular 2.8-liter engine make it our champion road beater.

**Datsun 280-ZX Highlights**

- 2.8-liter fuel-injected engine and choice of turbocharging
- Power-assisted 4-wheel disc brakes, ventilated in front
- Power-assisted rack-and-pinion steering
- Halogen headlights
- T-bar roof standard on Turbo ZX, optional on other models
- Optional leather seat package including full electronic digital instrument panel
- 5-way vocalized warning system
- Tinted glass windows
- Locking fuel-filler cap with remote release
- NACA type functional hood air inlet
- Alloy wheels
- Halogen headlights... and more, much more.

**1983 EPA ESTIMATED 280-ZX MPG**

	49 States HWY/MPG	California HWY/MPG
280-ZX 2-Seater: 5-speed	31/ (21)	31/ (21)
280-ZX 2+2: 5-speed	31/ (20)	31/ (20)
280-ZX 2-Seater: and 2+2: Automatic	27/ (19)	27/ (19)
Turbo ZX and 2+2: 5-speed	30/ (19)	30/ (19)
Turbo ZX: Automatic	24/ (19)	24/ (19)
Turbo 2+2: Automatic	24/ (18)	24/ (18)

Remember: Use estimated MPG for comparison. Your mileage may differ, depending on speed, weather and trip length. Your actual highway mileage will probably be less than the estimated highway fuel economy.

Some items shown are optional. See the 1983 Datsun 280-ZX brochure for more complete information.

**DIMENSIONS AND WEIGHTS**

	280-ZX 2-Seater	280-ZX 2+2	Turbo ZX	Turbo 2+2
Wheelbase (in.)	91.3	99.2	91.3	99.2
Length (in.)	174.0	181.9	174.0	181.9
Width (in.)	66.5	66.5	66.5	66.5
Height (in.)	51.0	51.4	51.0	51.4
Curb Weight* (lbs.)	2860	2958	2972	3081
Fuel Capacity (gal.)	21.1	21.1	21.1	21.1
Horsepower (5200 rpm)	145	145	—	—
Horsepower (5600 rpm)	—	—	180	180

\*Vehicles with optional equipment or California emissions equipment will be slightly heavier.



King Cab GL



Diesel King Cab



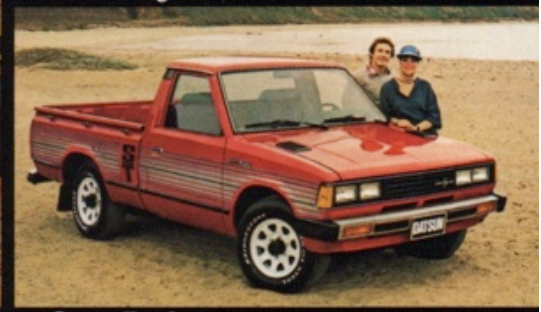
Diesel Long bed



Heavy Duty Long bed



Li'l Hustler



Sports Truck

## Diesel or gas: tough trucking.

Datsun brought compact trucking to the U.S. more than 22 years ago, and it's still out in front for work or play. Short bed or long bed, conventional or King Cab,<sup>®</sup> gasoline or diesel engine, 4-speed, 5-speed overdrive manual transmission or 3-speed automatic—the choices are yours to mix and match for a truck that's exactly tailored to your tastes.

### Datsun Truck Highlights

- Choice of 2.2-liter diesel (Deluxe Long bed and King Cab) or 2.2-liter NAPS-Z
- Independent front suspension
- Power-assisted front disc brakes... and more, much more.

### 1983 EPA ESTIMATED TRUCK MPG

	49 States HWY/MPG	California <sup>1</sup> HWY/MPG
<b>2-WHEEL DRIVE</b>		
Standard Li'l Hustler, Heavy Duty Long bed: 4-speed	31/ (25)	31/ (24)
Li'l Hustler, King Cab, Sports Truck: 5-speed	34/ (26)	31/ (24)
King Cab: Automatic	27/ (23)	27/ (22)
Diesel Long bed, King Cab: 5-speed	39/ (33)	39/ (32)
<b>4-WHEEL DRIVE</b>		
Li'l Hustler 4x4, Long bed 4x4: 4-speed	28/ (21)	27/ (20)
King Cab 4x4, Sports Truck 4x4: 5-speed	29/ (22)	26/ (19)

<sup>1</sup>Remember: Use estimated MPG for comparison. Your mileage may differ, depending on speed, weather and trip length. Your actual highway mileage will probably be less than the estimated highway fuel economy.

Some items shown are optional. See the 1983 Datsun Trucks brochure for more complete information.

### DIMENSIONS AND WEIGHTS

	2-WHEEL DRIVE			4-WHEEL DRIVE				
	Standard <sup>1</sup> Li'l Hustler	Deluxe Li'l Hustler <sup>1</sup> & Sports Truck <sup>1</sup>	Heavy Duty Long bed <sup>1,2</sup>	Deluxe Long bed Diesel	King Cab <sup>1</sup>	Li'l Hustler & Sports Truck <sup>1</sup>	Long bed <sup>1</sup>	King Cab <sup>1</sup>
Wheelbase (in.)	101.4	101.4	110.8	110.8	110.8	101.4	110.8	110.8
Length (in.)	169.3	171.7	187.0	187.0	187.0	171.7	187.0	187.0
Width (in.)	63.4	63.4	63.4	63.4	63.4	66.3 <sup>3</sup>	66.3 <sup>3</sup>	66.3 <sup>3</sup>
Height (in.)	61.2	61.2	61.8	81.0	61.2	67.1	66.9	67.1
Turning Circle (ft.) <sup>4</sup>	34.1	34.1	36.7	36.7	36.7	38.1	40.7	40.7
Min. Ground Clearance (in.)	7.9	7.9	7.9	7.9	7.9	8.9	8.9	8.7
Curb Weight (lbs.) <sup>5</sup>	2460	2460	2585	2715	2570 <sup>6</sup>	2890	2970	2985
Payload (lbs.) <sup>7</sup>	1400	1400	2100	1400	1400	1400	1400	1400
Fuel Capacity (gal.)	13.2	13.2	16.9	16.9	13.2	15.9	19.8	15.9
Bed Length (in.)	73.4	73.4	88.8	88.8	73.4	73.4	88.8	73.4
Bed Width (in.)	56.9	56.9	56.9	56.9	56.9	56.9	56.9	56.9
Bed Depth (in.)	15.6	15.6	15.6	15.6	15.6	15.6	15.6	15.6
Horsepower (Gas) @ 5200 rpm	98	98	98	—	98	98	98	98
Horsepower (Diesel) @ 4000 rpm	—	—	—	61	61	—	—	—

<sup>1</sup>California gasoline-powered Trucks will be 1982 models. <sup>2</sup>Sports Truck, Li'l Hustler and Heavy Duty Long bed not available with diesel. <sup>3</sup>With optional fender flares. <sup>4</sup>Curb-to-curb. <sup>5</sup>Vehicles with optional equipment or California emissions equipment will be slightly heavier. <sup>6</sup>Diesel King Cab: 2725. <sup>7</sup>Includes 300-pound allowance for passengers.





King Cab 4x4



Long bed 4x4



Sports Truck 4x4



Li'l Hustler 4x4

16 **Datsun 4x4 trucks. You can get there from here.**

Where the sign says "Road Ends" your fun begins in a Datsun 4x4 truck. It'll tame the toughest terrain and impress you with its polite highway manners. Datsun 4x4 trucks treat you kindly with comfortable seats, efficient ventilation and a list of features to make life easier. They make the "out back" seem like your backyard.

- Datsun 4x4 Highlights**
- 2.2-liter, 4-cyl. NAPS-Z hemi engine
  - Independent front suspension
  - Power-assisted steering
  - Front stabilizer bar
  - 5-speed overdrive manual transmission (Deluxe King Cab and Sports Truck)...and more, much more.

Some items shown are optional. See the 1983 Datsun Trucks brochure for more complete information.

All illustrations and specifications in this catalog are based on the latest product information available at time of publication. Nissan Motor Corporation in U.S.A. reserves the right to make changes at any time, without notice, in prices, colors, materials, equipment, specifications and models, and to discontinue models or equipment. For information on additional options and accessories, contact your Datsun dealer. All specifications, options and accessories may differ in Hawaii, U.S. territories and other countries.

AUS-WE-10-82 315M-GR-1

© Copyright 1982, Nissan Motor Corporation in U.S.A.

**DATSUN**  
**WE ARE DRIVEN**

PRODUCT OF NISSAN